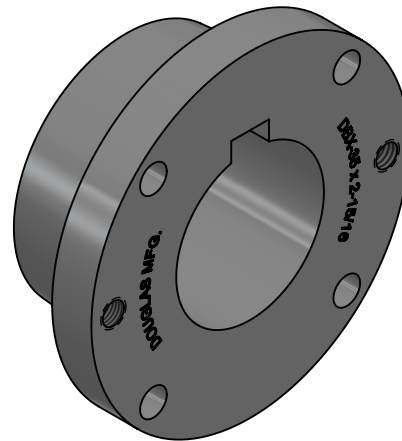


## DOUGLAS XT STYLE BUSHING STANDARD

Douglas XT Style Bushings provide a 2" per foot taper and offer superior holding power for conveyor pulleys.

They provide easier installation and removal compared to other bushing types.

Full size keys in maximum bores of DBX-50 & larger bushings.



BUSHING	A	B	C	CAP SCREW
DBX-15	2-7/8	1-1/8	3/8	(4)Ø1/4 X 1
DBX-20	3-3/4	1-13/32	15/32	(4)Ø5/16 X 1-1/4
DBX-25	4-7/16	1-7/8	5/8	(4)Ø3/8 X 1-3/4
DBX-30	5-5/16	2-1/16	11/16	(4)Ø7/16 X 1-1/2
DBX-35	6-5/16	2-15/32	25/32	(4)Ø1/2 X 1-3/4
DBX-40	7-1/8	2-13/16	7/8	(4)Ø9/16 X 2
DBX-45	8	3-5/16	15/16	(4)Ø5/8 X 2-1/4
DBX-50	10-1/8	3-3/4	1	(4)Ø3/4 X 2-1/2
DBX-60	11-15/16	4-1/8	1-1/8	(4)Ø7/8 X 2-1/2
DBX-70	13-15/16	4-11/16	1-5/16	(4)Ø1 X 3
DBX-80	15-5/8	5-1/8	1-3/8	(4)Ø1-1/8 X 3-1/2
DBX-100	17-15/16	6-3/16	1-9/16	(6)Ø1-1/8 X 3-1/2
DBX-120	20-5/8	7-1/16	1-3/4	(6)Ø1-1/8 X 3-1/2

(SEE NEXT PAGE FOR STANDARD BORE SIZES)

All dimensions and specifications subject to change without notice.  
 Certified dimensions and specifications of ordered material available on request.  
 Copyright © 2015, Douglas Manufacturing Co., Inc. All rights reserved.

## DOUGLAS XT STYLE BUSHING STANDARD (CONT'D.)

BUSHING	BORE	BUSHING KEYWAY	SHAFT KEYWAY	*WEIGHT
<b>DBX-15</b>	5/8 – 7/8	3/16 X 3/32	3/16 X 3/32	1.1
	15/16 – 1-1/4	1/4 X 1/8	1/4 X 1/8	1.1
	15/16 – 1-3/8	5/16 X 5/32	5/16 X 5/32	1.1
	1-7/16 – 1-1/2▲	3/8 X 1/8	3/8 X 3/16	1.1
<b>DBX-20</b>	3/4 – 7/8	3/16 X 3/32	3/16 X 3/32	2.1
	15/16 – 1-1/4	1/4 X 1/8	1/4 X 1/8	2.1
	1-5/16 – 1-3/8	5/16 X 5/32	5/16 X 5/32	2.1
	1-1/16 – 1-3/4	3/8 X 3/16	3/8 X 3/16	2.1
	1-13/16 – 2▲	1/2 X 3/16	1/2 X 1/4	2.1
<b>DBX-25</b>	1 – 1-1/4	1/4 X 1/8	1/4 X 1/8	3.5
	1-5/16 – 1-3/8	5/16 X 5/32	5/16 X 5/32	3.5
	1-7/16 – 1-3/4	3/8 X 3/16	3/8 X 3/16	3.5
	1-13/16 – 2-1/4	1/2 X 1/4	1/2 X 1/4	3.5
	2-5/16 – 2-1/2▲	5/8 X 1/8	5/8 X 5/16	3.5
<b>DBX-30</b>	1-7/16 – 1-3/4	3/8 X 3/16	3/8 X 3/16	6.2
	1-13/16 – 2-1/4	1/2 X 1/4	1/2 X 1/4	6.2
	2-5/16 – 2-3/4	5/8 X 5/16	5/8 X 5/16	6.2
	2-13/16	3/4 X 3/8	3/4 X 3/8	6.2
	2-7/8 – 3▲	3/4 X 3/16	3/4 X 3/8	6.2
<b>DBX-35</b>	1-15/16 – 2-1/4	1/2 X 1/4	1/2 X 1/4	10.4
	2-5/16 – 2-3/4	5/8 X 5/16	5/8 X 5/16	10.4
	2-13/16 – 3-1/4	3/4 X 3/8	3/4 X 3/8	10.4
	3-5/16 – 3-3/8	7/8 X 7/16	7/8 X 7/16	10.4
	3-7/16 – 3-1/2▲	7/8 X 5/16	7/8 X 7/16	10.4
<b>DBX-40</b>	2-7/16 – 2-3/4	5/8 X 5/16	5/8 X 5/16	13.3
	2-13/16 – 3-1/4	3/4 X 3/8	3/4 X 3/8	13.3
	3-5/16 – 3-3/4	7/8 X 7/16	7/8 X 7/16	13.3
	3-13/16	1 X 1/2	1 X 1/2	13.3
	3-7/8 – 4▲	1 X 3/8	1 X 1/2	13.3
<b>DBX-45</b>	3-7/16 – 3-3/4	7/8 X 7/16	7/8 X 7/16	18.5
	3-13/16 – 4-5/16	1 X 1/2	1 X 1/2	18.5
	4-3/8 – 4-1/2▲	1 X 3/8	1 X 1/2	18.5
<b>DBX-50</b>	3-15/16 – 4-1/2	1 X 1/2	1 X 1/2	35.5
	4-9/16 – 5	1-1/4 X 5/8	1-1/4 X 5/8	35.5
<b>DBX-60</b>	4-15/16 – 5-1/2	1-1/4 X 5/8	1-1/4 X 5/8	48
	5-9/16 – 6	1-1/2 X 3/4	1-1/2 X 3/4	48
<b>DBX-70</b>	5-5/16 – 6-1/2	1-1/2 X 3/4	1-1/2 X 3/4	74.6
	6-9/16 – 7	1-3/4 X 3/4	1-3/4 X 3/4	74.6
<b>DBX-80</b>	6-15/16 – 7-1/2	1-3/4 X 3/4	1-3/4 X 3/4	96.6
	7-9/16 – 8	2 X 3/4	2 X 3/4	96.6
<b>DBX-100</b>	8-1/2,9	2 X 3/4	2 X 3/4	146
	9-7/16,9-1/2,10	2-1/2 X 7/8	2-1/2 X 7/8	146
<b>DBX-120</b>	10-1/2, 11	2-1/2 X 7/8	2-1/2 X 7/8	216
	11-1/2,12	3 X 1	3 X 1	216

\* WEIGHT VARIES BY BORE SIZE  
 ▲ KEY PROVIDED FOR THESE BORE SIZES ONLY  
 METRIC BORES AVAILABLE BY REQUEST