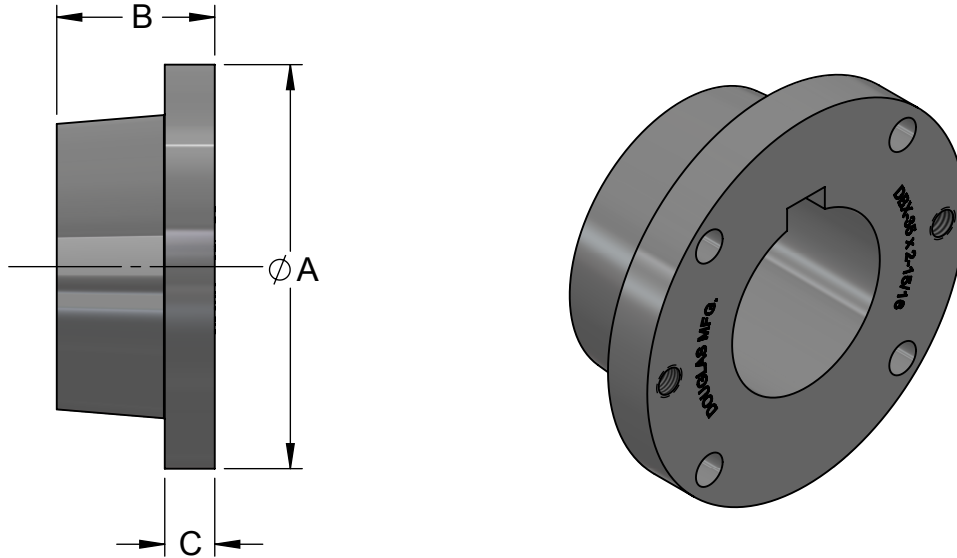


## DOUGLAS XT STYLE BUSHING STANDARD

Douglas XT Style Bushings provide a 2" per foot taper and offer superior holding power for conveyor pulleys.

They provide easier installation and removal compared to other bushing types.

Full size keys in maximum bores of DBX-50 & larger bushings.



BUSHING	A	B	C	CAP SCREW
DBX-15	2-7/8	1-1/8	3/8	(4)Ø1/4 X 1
DBX-20	3-3/4	1-13/32	15/32	(4)Ø5/16 X 1-1/4
DBX-25	4-7/16	1-7/8	5/8	(4)Ø3/8 X 1-3/4
DBX-30	5-5/16	2-1/16	11/16	(4)Ø7/16 X 1-1/2
DBX-35	6-5/16	2-15/32	25/32	(4)Ø1/2 X 1-3/4
DBX-40	7-1/8	2-13/16	7/8	(4)Ø9/16 X 2
DBX-45	8	3-5/16	15/16	(4)Ø5/8 X 2-1/4
DBX-50	10-1/8	3-3/4	1	(4)Ø3/4 X 2-1/2
DBX-60	11-15/16	4-1/8	1-1/8	(4)Ø7/8 X 2-1/2
DBX-70	13-15/16	4-11/16	1-5/16	(4)Ø1 X 3
DBX-80	15-5/8	5-1/8	1-3/8	(4)Ø1-1/8 X 3-1/2
DBX-100	17-15/16	6-3/16	1-9/16	(6)Ø1-1/8 X 3-1/2
DBX-120	20-5/8	7-1/16	1-3/4	(6)Ø1-1/8 X 3-1/2

### STAINLESS STEEL BUSHINGS AVAILABLE ON REQUEST

(SEE NEXT PAGE FOR STANDARD BORE SIZES)

All dimensions and specifications subject to change without notice.  
 Certified dimensions and specifications of ordered material available on request.  
 Copyright © 2015, Douglas Manufacturing Co., Inc. All rights reserved.

## DOUGLAS XT STYLE BUSHING STANDARD (CONT'D.)

BUSHING	BORE	BUSHING KEYWAY	SHAFT KEYWAY	KEY RECOMMENDED	*WEIGHT
DBX-15	5/8 – 7/8	3/16 X 3/32	3/16 X 3/32	3/16 x 3/16 x 1-1/8	1.1
	15/16 – 1-1/4	1/4 X 1/8	1/4 X 1/8	1/4 x 1/4 x 1-1/8	1.1
	15/16 – 1-3/8	5/16 X 5/32	5/16 X 5/32	5/16 x 5/16 x 1-1/8	1.1
	1-7/16 – 1-1/2 ▲	3/8 X 1/8	3/8 X 3/16	3/8 x 5/16 x 1-1/8	1.1
DBX-20	3/4 – 7/8	3/16 X 3/32	3/16 X 3/32	3/16 x 3/16 x 1-3/8	2.1
	15/16 – 1-1/4	1/4 X 1/8	1/4 X 1/8	1/4 x 1/4 x 1-3/8	2.1
	1-5/16 – 1-3/8	5/16 X 5/32	5/16 X 5/32	5/16 x 5/16 x 1-3/8	2.1
	1-1/16 – 1-3/4	3/8 X 3/16	3/8 X 3/16	3/8 x 3/8 x 1-3/8	2.1
	1-13/16 – 2 ▲	1/2 X 3/16	1/2 X 1/4	1/2 x 7/16 x 1-3/8	2.1
DBX-25	1 – 1-1/4	1/4 X 1/8	1/4 X 1/8	1/4 x 1/4 x 1-3/4	3.5
	1-5/16 – 1-3/8	5/16 X 5/32	5/16 X 5/32	5/16 x 5/16 x 1-3/4	3.5
	1-7/16 – 1-3/4	3/8 X 3/16	3/8 X 3/16	3/8 x 3/8 x 1-3/4	3.5
	1-13/16 – 2-1/4	1/2 X 1/4	1/2 X 1/4	1/2 x 1/2 x 1-3/4	3.5
	2-5/16 – 2-1/2 ▲	5/8 X 1/8	5/8 X 5/16	5/8 x 7/16 x 1-3/4	3.5
DBX-30	1-7/16 – 1-3/4	3/8 X 3/16	3/8 X 3/16	3/8 x 3/8 x 2	6.2
	1-13/16 – 2-1/4	1/2 X 1/4	1/2 X 1/4	1/2 x 1/2 x 2	6.2
	2-5/16 – 2-3/4	5/8 X 5/16	5/8 X 5/16	5/8 x 5/8 x 2	6.2
	2-13/16	3/4 X 3/8	3/4 X 3/8	3/4 x 3/4 x 2	6.2
	2-7/8 – 3 ▲	3/4 X 3/16	3/4 X 3/8	3/4 x 9/16 x 2	6.2
DBX-35	1-15/16 – 2-1/4	1/2 X 1/4	1/2 X 1/4	1/2 x 1/2 x 2-1/2	10.4
	2-5/16 – 2-3/4	5/8 X 5/16	5/8 X 5/16	5/8 x 5/8 x 2-1/2	10.4
	2-13/16 – 3-1/4	3/4 X 3/8	3/4 X 3/8	3/4 x 3/4 x 2-1/2	10.4
	3-5/16 – 3-3/8	7/8 X 7/16	7/8 X 7/16	7/8 x 7/8 x 2-1/2	10.4
	3-7/16 – 3-1/2 ▲	7/8 X 5/16	7/8 X 7/16	7/8 x 3/4 x 2-1/2	10.4
DBX-40	2-7/16 – 2-3/4	5/8 X 5/16	5/8 X 5/16	5/8 x 5/8 x 2-3/4	13.3
	2-13/16 – 3-1/4	3/4 X 3/8	3/4 X 3/8	3/4 x 3/4 x 2-3/4	13.3
	3-5/16 – 3-3/4	7/8 X 7/16	7/8 X 7/16	7/8 x 7/8 x 2-3/4	13.3
	3-13/16	1 X 1/2	1 X 1/2	1 x 1 x 2-3/4	13.3
	3-7/8 – 4 ▲	1 X 3/8	1 X 1/2	1 x 7/8 x 2-3/4	13.3
DBX-45	3-7/16 – 3-3/4	7/8 X 7/16	7/8 X 7/16	7/8 x 7/8 x 3-1/4	18.5
	3-13/16 – 4-5/16	1 X 1/2	1 X 1/2	1 x 1 x 3-1/4	18.5
	4-3/8 – 4-1/2 ▲	1 X 3/8	1 X 1/2	1 x 7/8 x 3-1/4	18.5
DBX-50	3-15/16 – 4-1/2	1 X 1/2	1 X 1/2	1 x 1 x 4-3/4	35.5
	4-9/16 – 5	1-1/4 X 5/8	1-1/4 X 5/8	1-1/4 x 1-1/4 x 4-3/4	35.5
DBX-60	4-15/16 – 5-1/2	1-1/4 X 5/8	1-1/4 X 5/8	1-1/4 x 1-1/4 x 5-1/8	48
	5-9/16 – 6	1-1/2 X 3/4	1-1/2 X 3/4	1-1/2 x 1-1/2 x 5-1/8	48
DBX-70	5-5/16 – 6-1/2	1-1/2 X 3/4	1-1/2 X 3/4	1-1/2 x 1-1/2 x 5-3/4	74.6
	6-9/16 – 7	1-3/4 X 3/4	1-3/4 X 3/4	1-3/4 x 1-1/2 x 5-3/4	74.6
DBX-80	6-15/16 – 7-1/2	1-3/4 X 3/4	1-3/4 X 3/4	1-3/4 x 1-1/2 x 6-1/8	96.6
	7-9/16 – 8	2 X 3/4	2 X 3/4	2 x 1-1/2 x 6-1/8	96.6
DBX-100	8-1/2, 9	2 X 3/4	2 X 3/4	2 x 1-1/2 x 7-1/4	146
	9-7/16, 9-1/2, 10	2-1/2 X 7/8	2-1/2 X 7/8	2-1/2 x 1-3/4 x 7-1/4	146
DBX-120	10-1/2, 11	2-1/2 X 7/8	2-1/2 X 7/8	2-1/2 x 1-3/4 x 8-1/8	216
	11-1/2, 12	3 X 1	3 X 1	3 x 2 x 8-1/8	216

\* WEIGHT VARIES BY BORE SIZE

▲ KEY PROVIDED FOR THESE BORE SIZES ONLY  
METRIC BORES AVAILABLE BY REQUEST

All dimensions and specifications subject to change without notice.  
Certified dimensions and specifications of ordered material available on request.  
Copyright © 2015, Douglas Manufacturing Co., Inc. All rights reserved.